

cement design

# POWDER

3 colours | 1 size | 1 surface

**FEATURES**

-   
**THICKNESS**  
8.5mm
-   
**RECTIFIED**
-   
**VARIATION**

**SURFACE**

-   
**NATURAL**

**APPLICATIONS**

-   
**MIN. 3mm**
-   
**WALL**
-   
**FLOOR**

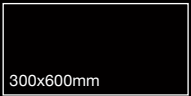


www.feruni.com

**INSPIRED BY CEMENT**

As far as modern tiles design goes, cement remains a favourite selection to infuse a naturally urban and edgy ambiance. With Powder, creating a modern yet luxurious look comes with ease thanks to its neutral colours and concrete effects. Powder speaks of minimal elegance, allowing the environment to take on a fresh and contemporary atmosphere with its rich, captivating visual impressions.

**Size**



**Colours**

300x600mm

**DECORS**

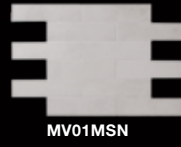
247.3x376.5mm



BIANCO MV01N



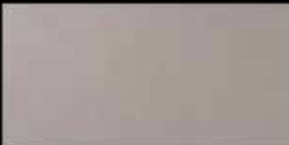
GRIGIO SCURO MV03N



MV01MSN



MV03MSN



GRIGIO CHIARO MV05N



MV05MSN